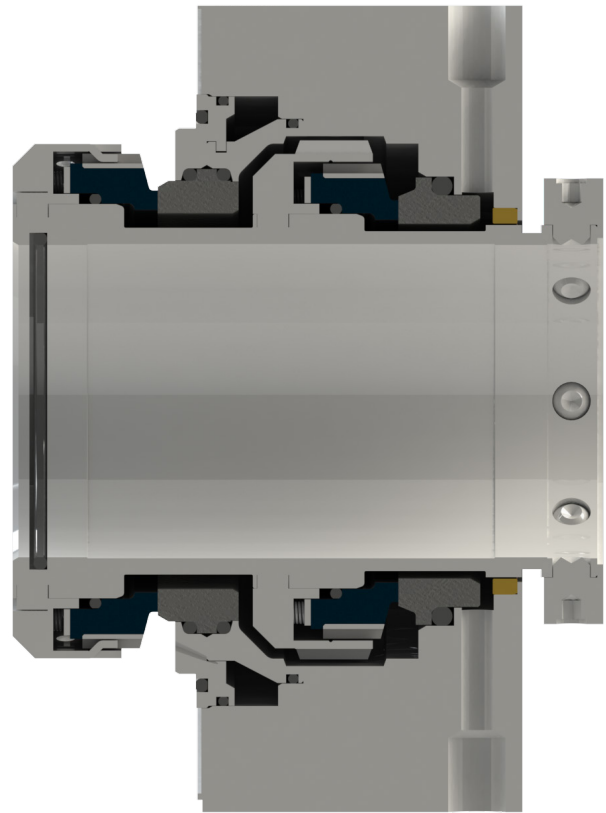


HEAVY DUTY ROTATING MULTI-SPRING TANDEM CARTRIDGE SEAL FOR API 682 APPLICATIONS

The **Flexaseal Style 80A** is designed specifically to conform to API 682 Category 2 Applications for Midstream and Downstream Oil and Gas Applications where a Pressurized or Unpressurized Tandem Arrangement is Desired. Standard design features include:

- Oversized Monolithic Seal Faces for superior heat dissipation and durability.
- Tang Drive System for reliable face torque transfer and reduced O-Ring hang up.
- Heavy Duty Springs to mitigate process debris clogging and reduce spring quantity.
- Cushion Mounted Primary Seat to increase reliability in harsh services.
- Retained Seal Faces for pressurized or unpressurized barrier systems.
- Optimized Pumping Ring for higher barrier fluid flow and better seal cooling.

Flush Plans 11/52/53A/53B/54



MATERIALS OF CONSTRUCTION

| | |
|-------------------------|---|
| Rotary Faces | Silicon Carbide |
| Stationary Faces | Carbon, Silicon Carbide, Tungsten Carbide |
| Springs | Hastelloy C276* |
| Metal Parts | 316 Stainless Steel |
| O. Rings | Viton®, Ethylene Propylene, AFLAS, Perfluoroelastomer |

OPERATING PARAMETERS

| | |
|---------------------|-----------------------------|
| Max Temp | -40 to 400°F / -40 to 204°C |
| Max Pressure | 600 PSIG / 41.4 bar |
| Max Speed | 4,500 FPM / 23m/s |

*Max Temperature / pressure / speed indicate operating extremes independently and do not imply the seal will function at these extremes at the same time. Contact Flexaseal if in doubt.

HEAVY DUTY ROTATING MULTI-SPRING TANDEM CARTRIDGE SEAL

FOR API 682 APPLICATIONS

DESIGN FEATURES & BENEFITS

