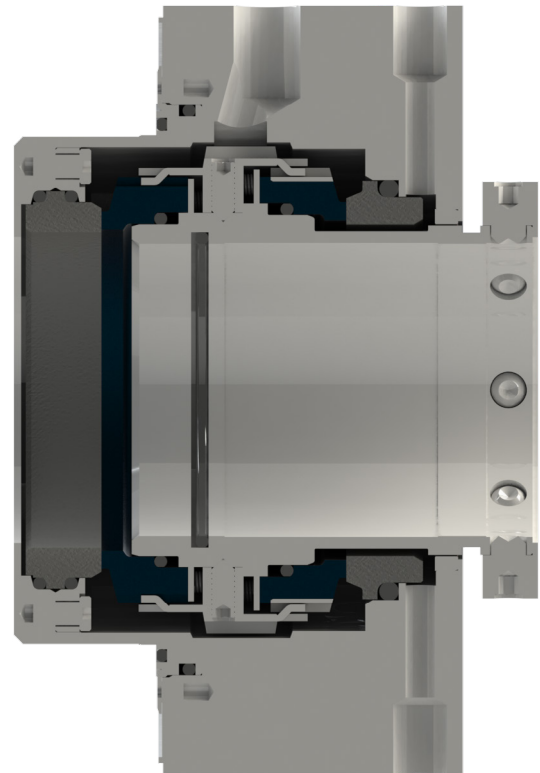


HEAVY DUTY ROTATING MULTI-SPRING DUAL CARTRIDGE SEAL FOR API 682 APPLICATIONS

The **Flexaseal Style 90A** is designed specifically to conform to API 682 Category 2 Applications for Midstream and Downstream Oil and Gas Applications where a Pressurized Dual Arrangement is Desired. Standard design features include:

- Oversized Monolithic Seal Faces for superior heat dissipation and durability.
- Tang Drive System for reliable face torque transfer and reduced O-Ring hang up.
- Heavy Duty Springs to mitigate process debris clogging and reduce spring quantity.
- Cushion Mounted Primary Seat to increase reliability in harsh services.
- Retained Seal Faces for pressurized barrier systems.
- Optimized Pumping Ring for higher barrier fluid flow and better seal cooling.
- OD Pressure Design for enhanced solids handling, barrier fluid distribution and seal reliability.

Flush Plans 11/53A/53B/54



MATERIALS OF CONSTRUCTION

Rotary Faces	Silicon Carbide
Stationary Faces	Carbon, Silicon Carbide, Tungsten Carbide
Springs	Hastelloy C276*
Metal Parts	316 Stainless Steel
O. Rings	Viton®, Ethylene Propylene, AFLAS, Perfluoroelastomer

OPERATING PARAMETERS

Max Temp	-40 to 400°F / -40 to 204°C
Max Pressure	600 PSIG / 41.4 bar
Max Speed	4,500 FPM / 23m/s

*Max Temperature / pressure / speed indicate operating extremes independently and do not imply the seal will function at these extremes at the same time. Contact Flexaseal if in doubt.

HEAVY DUTY ROTATING MULTI-SPRING DUAL CARTRIDGE SEAL

FOR API 682 APPLICATIONS

DESIGN FEATURES & BENEFITS

